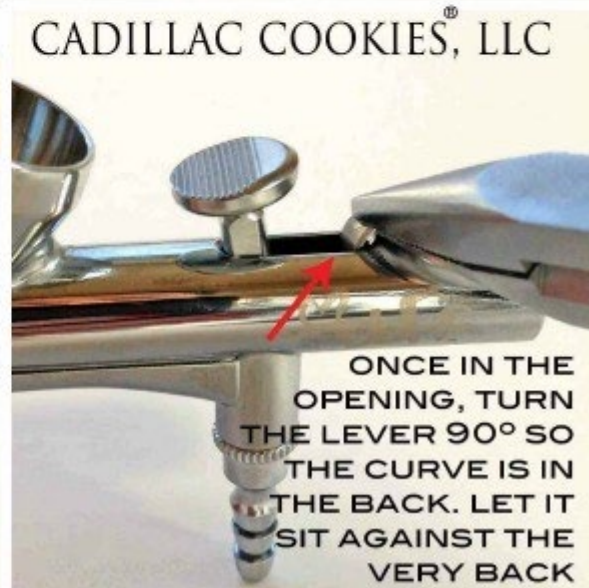
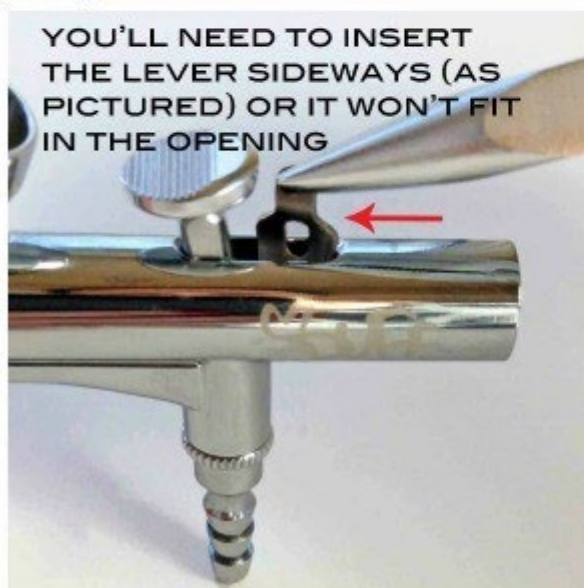
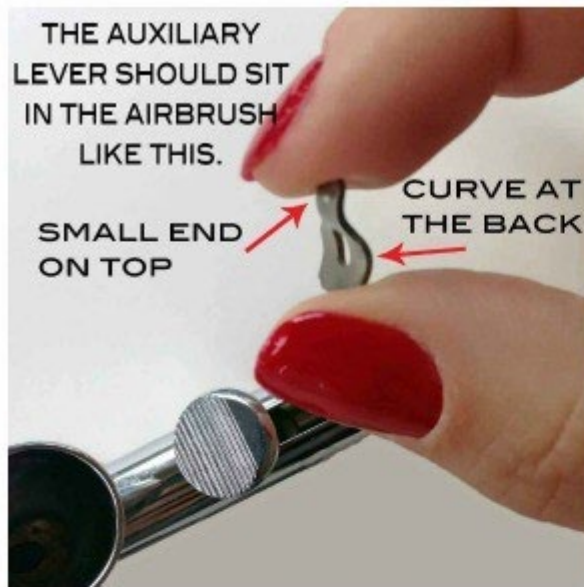


ASSEMBLY OF AIRBRUSH

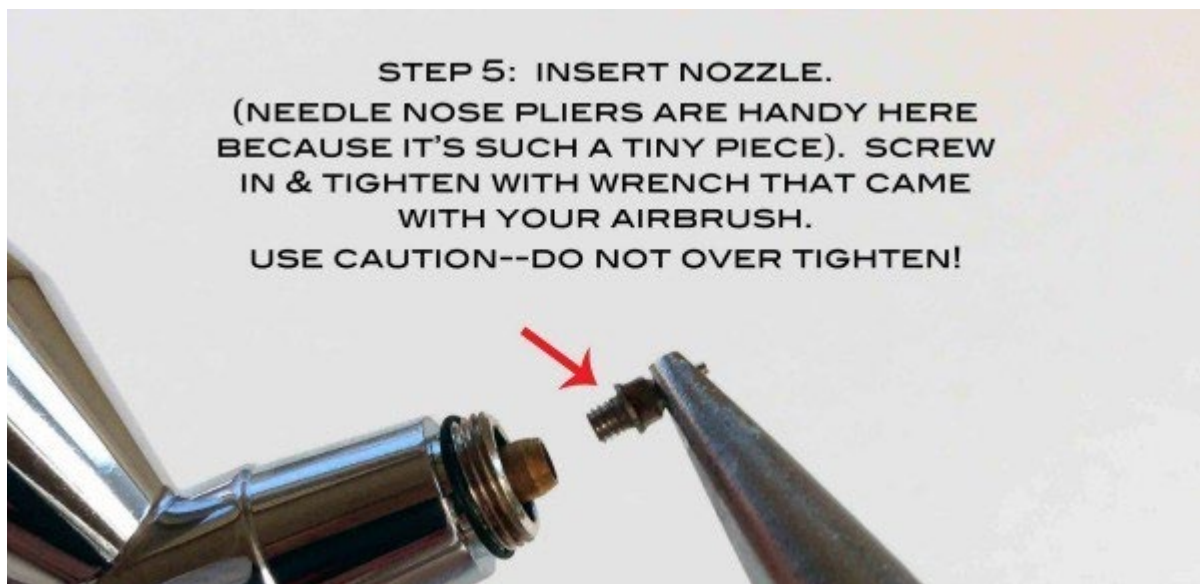


To assemble, follow the instructions below:





After you've replaced and tightened the spring guide (Step 4), double check your trigger. Pull it back and make sure it's not too loose. If it feels too loose, then you've not tightened the spring guide enough.



**STEP 6: INSERT THE NEEDLE
(POINTY SIDE FIRST) ALL OF THE
WAY THROUGH THE NEEDLE
CHUCKING GUIDE.**



**NEEDLE SHOULD BE PUSHED
ALL OF THE WAY THROUGH TO
THE END! YOU CAN SEE IT &
YOU'LL FEEL RESISTANCE
WHEN IT'S IN ALL OF THE WAY**



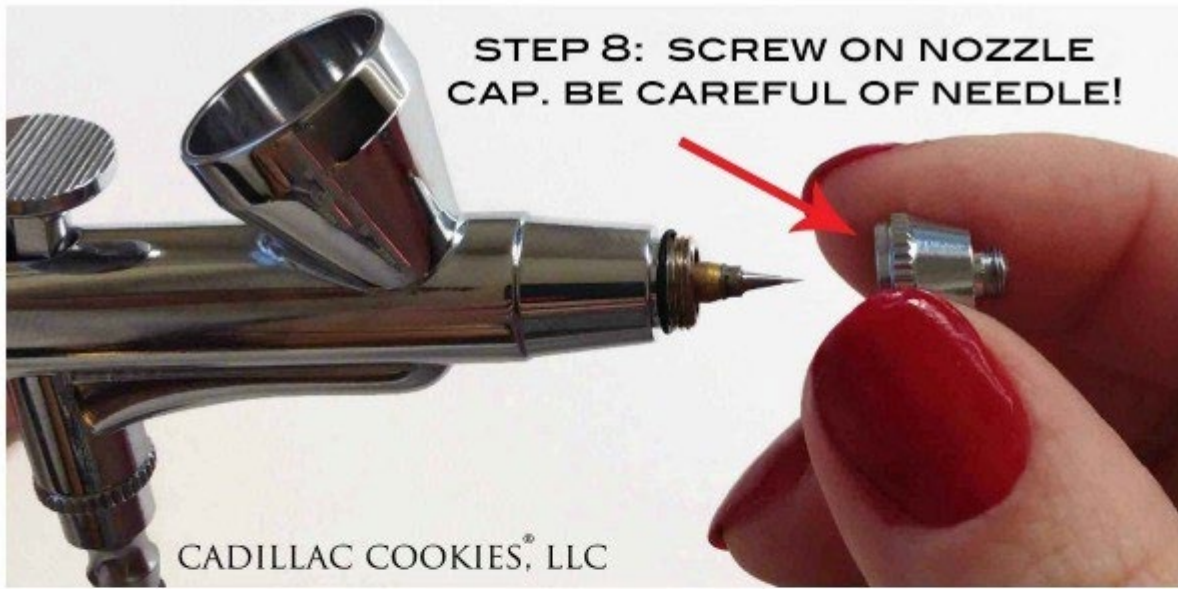
CADILLAC COOKIES®, LLC

**STEP 7: SLIDE NEEDLE CHUCKING
NUT OVER THE NEEDLE AND SPRING
GUIDE. TIGHTEN SECURELY**



CADILLAC COOKIES®, LLC

**STEP 8: SCREW ON NOZZLE
CAP. BE CAREFUL OF NEEDLE!**



**STEP 9: SCREW ON
CROWN NEEDLE CAP.
CAUTION OF NEEDLE!**

